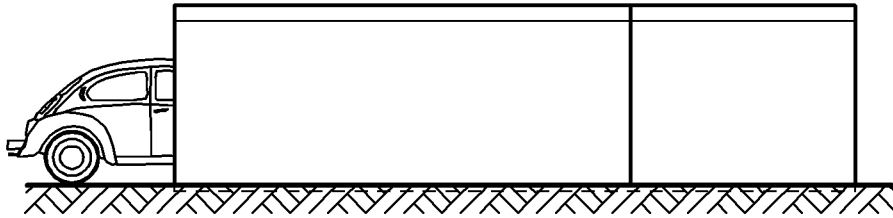
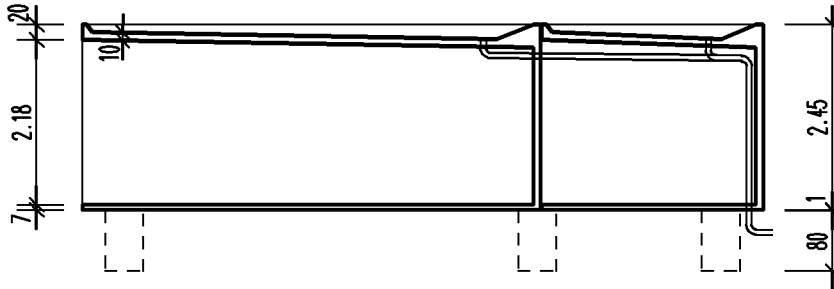


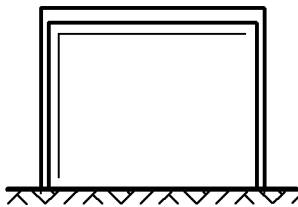
Seitenansicht



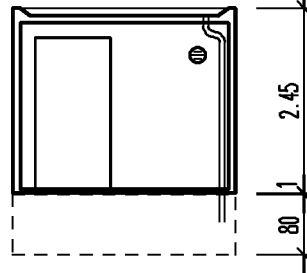
Längsschnitt



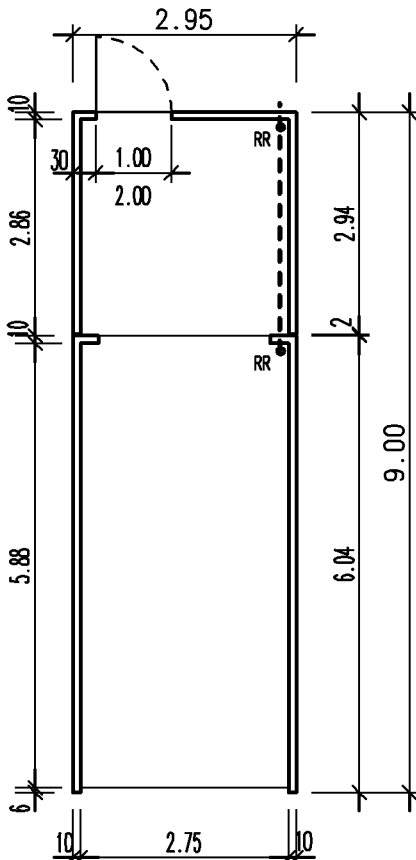
Vorderansicht



Querschnitt

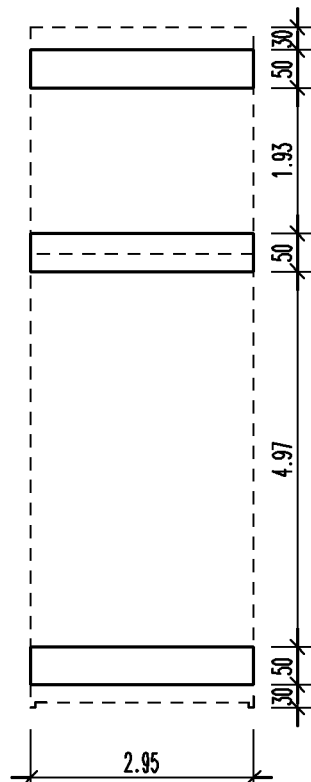


Grundriss



Gründung

gem. Typenstatik



Bauherr

·
·
·

Bauvorhaben

·
·
·

Auftrag
Stand: 29/08/03 Dr.

Entwurfsverfasser

Nutzfl. : 24.31 qm
umb.Raum: 65.05 cbm

Garage Typ K

M. 1:100

k3-1a3v